



Tole Talk

Volume 24, Issue 1

January 2012

Inside This Issue:

President's Note	1
Programs	2
Membership	3
Tole Month	3
Seminars	4
Hospitality	4
Sunshine/Birthdays	4
Painting Pearls	4
Holiday Party	5
Summer Retreat	5
Calendar at a glance	5
Pacific Coast Painters Seminar	6
2012 Board/Committees	7
Directions to Meeting	8

Become a member:
 Silver State Tole & Decorative Painters (SSTD DP) chapter dues are \$25 annually. Dues to join the Society of Decorative Painters (SDP), the national organization, are \$50 annually for an individual membership. To join SSTD DP, you must join SDP.

Editor Notes
 Articles are due the 21st of the month. Please submit articles in a timely manner. Submissions may be in written form or email. Send your written article to:

Kris Waskiewicz, Editor
 2523 Braehead Lane
 Henderson, NV 89044

702-869-2126

kw4sstdp@embarqmail.com

Advertising Rates

Full page..... \$20.00
 Half page..... \$10.00
 Quarter page..... \$ 5.00
 Business cards..... \$ 3.00
 1 line..... \$ 1.00

PRESIDENT'S NOTE

I am writing my first article for our newsletter as I sit in the Minneapolis/St. Paul airport waiting for my return flight to Las Vegas. It did not snow and I did not freeze my "tushy". Minnesotans believe that they will be experiencing a "brown" Christmas this year and I think they are right.

Sharon, I would like to thank you for your leadership during the last two years. I am glad that you will still be onboard to help me out. I have always felt I was better at behind-the-scenes leadership, but sometimes we get a push—or in my case a big shove—to stretch and grow.

I don't know about you but it is difficult to believe that we are starting a new year ... what happened to 2011? We ended 2011 with a beautiful "Candy Cane Lane" Holiday Party planned by Carole Liccardo and as she loving calls "her team". All the beautifully painted centerpieces, candy jars and clothespin recipe card holders looked elegant. Who can forget Pat Gettemeyer having such a great time calling Bingo and Anita Miller and her cute dance during the gift exchange. Every time that poor girl fell in love with a gift someone would take it away from her.

Have you paid your Chapter and SDP dues? If not, do so as soon as possible ... we need you all to support this great Chapter and the painting experiences offered.

With the help of all the Chapter members it will be a great 2012. There are many opportunities to volunteer to help on a committee. It is my feeling that everyone should be able to help in some way on at least one committee. This also gives you a chance to get to know one another better because there are fewer ladies at a committee meeting. There are many wonderful painting projects planned by Program Chairman Gwen Palmer. Our own Chapter members who teach are so willing to share what they have learned from the "big brushes" they have taken classes from. In addition to our regular Paint-Ins and Workshops we will have a one-day class with Kim Hogue. I for one have never painted with Kim and I am excited about this opportunity. We are looking forward to a three-day seminar taught by Prudy Vannier ... she does paint more than her little trademark elves. Anita will be giving us more information at a later date.

Now get those brushes ready to have a fun-filled year of painting.

Barbara



Programs by Gwen Palmer



Hello Chapter Members,

Hope everyone is having wonderful Holidays with friends and family. The chapter holiday party was so much fun, we had a wonderful time, thanks to everyone who pulled it all together. I hope everyone got their color copy of the calendar of our 2012 projects—thanks to Sharon Shuster for putting it together. If you haven't received your copy, contact Sharon.

We are already off to a great start for 2012 with our programs; we have 16 signed up for the January 14th Paint-In. We are so glad to have Debbie Ruttenburg teach us a project she designed—a pumpkin with corn and mice. I do want to point out that the pattern packets are all gone, and I had over 20 copies. If you have taken a pattern packet and have not signed up, please send me your \$10.00 to hold your spot. Remember, these pattern packets cost our teachers money, and they are designated for only those who have signed up for a class. You may sign up by putting your name on an envelope and pay me later; that way I know who has a pattern packet and who still owes for the class. I really would like to be able to continue to leave the patterns out without having to monitor the sign-up table/box, so your cooperation is appreciated. My records show the following members have signed up: Carole Liccardo, Sheila Skinner, Cathy Frazier, Sheila Hughes, Louise Solheim, Sandy Kilgore, Pat G., Linda Page, Kris W., Beth Buchwald, Anita Miller, Pat S., Patty C., Barbara Paetzel, Evie Vaccaro, and Gwen Palmer. If your name is not on this list and you have a pattern packet, please let me know.

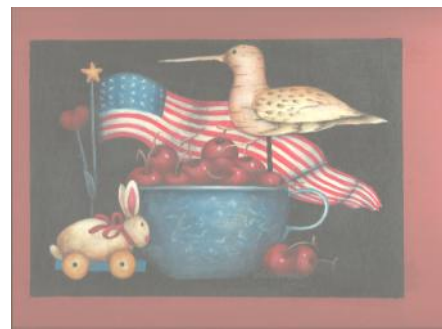
On February 11, Sheila Hughes will teach a Workshop. Her project—very Americana—features a flag with a bowl of cherries and a bird designed by Ronnie Bringle. Sheila will have her pattern packets at our next meeting; 11 painters have already signed up. The cost of her class is \$15.00, nonrefundable.

The teacher for our March 10th Workshop is Cathy Fraizer. Her project, which was designed by Peggy Harris, features a black cat on a dark tin. The cost for her class is \$15.00, nonrefundable.

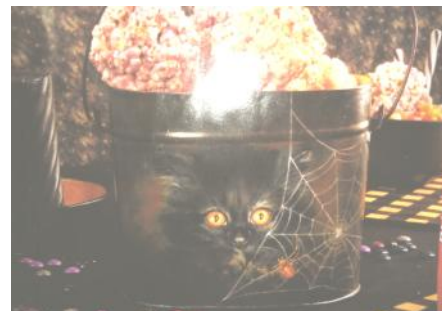
Remember to bring your lunches to our meetings. We have a lot of great projects this year.



January



February



March



Membership

Hello 2012! For all those members who joined before December 9, 2011 your name will go into an Early Bird drawing to be held in the new year! I was happy to see so many members at the holiday party. It's good to see old friends and new friends at such a fun event. Carole and her committee worked hard to make our last event a success.

I will have a membership list at the January meeting; please check to make sure your information is correct before I publish the new directory.

During the year we will have a variety of incentives to bring in new members, keep checking in the newsletter for the very latest information. Spread the word about this great Chapter to all of your friends and anyone you meet around town.

If you haven't heard, there was a very nice article about the Chapter in the latest issue of *The Decorative Painter*! Thanks to Pat Gettemeyer and her committee for such a nice Tole Month display.

Thanks, Sharon



Tole Month

Did everyone have a nice Christmas? Sure hope so. And just a note to say thank you to everyone for such a fun holiday party. All the painted treasures are beautiful and will be cherished, the food was fabulous, and it was nice to have lots of time to socialize with good friends at a great facility. Anyone up for a quick game of Bingo???

Now it is time to return to our tasks at hand. The Tole Month committee will be placing our display into 2 kiosks at the Trails Library in Summerlin on January 4. The location is 1771 Inner Circle, Las Vegas, NV 89134. **WE NEED YOUR DONATED ITEMS!!** They will be in the display until February, so I hope everyone will take the time to go see it. Please give your items to Patty Clark, Anita Miller, or me before the 4th.

Also, we will be demonstrating our craft at the Trails Library on Saturday, February 4, 2012 from 10 am to 1 pm. We will have a planning meeting on Wednesday, January 11 @ 10:00 am at my house for those who have volunteered already and others who want to volunteer to help. This is a great opportunity for us to get our chapter into the community and hopefully obtain some new members. This is a chapter effort, so let's get involved in this community service project!!!

Thanks to everyone for their support and participation this past year. I hope you will give your all to the next chairperson of Tole Month.

Has everyone seen our article about Tole Month on page 113 of the December issue of *The Decorative Painter* magazine? WhooohHoo!!

Happy painting,
Pat Gettemeyer

SEMINARS with Anita Miller

It's time to start thinking about our up-and-coming seminar February 25, 2012 with Kim Hogue. We will be painting "A Tin Full of Geraniums"; see it on her website, www.heavenlyheartcreations.com. I will get you the measurements; Kim does suggest that it should not be done on tin, as her highlight method would not work. I will have a picture for you at the January meeting.

HOSPITALITY

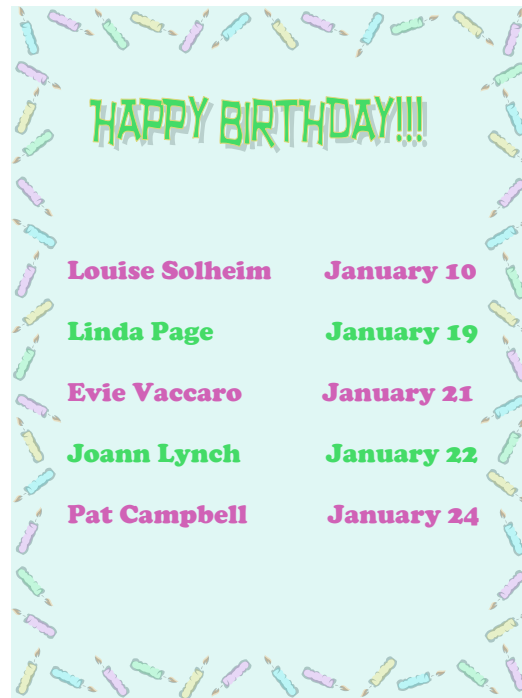
Happy New Year everyone! This year promises to be as exciting as last year thanks to all of you who do so much for the Chapter.

I have accepted the Hospitality Committee Chairman position. I will need your help to make things run smoothly.

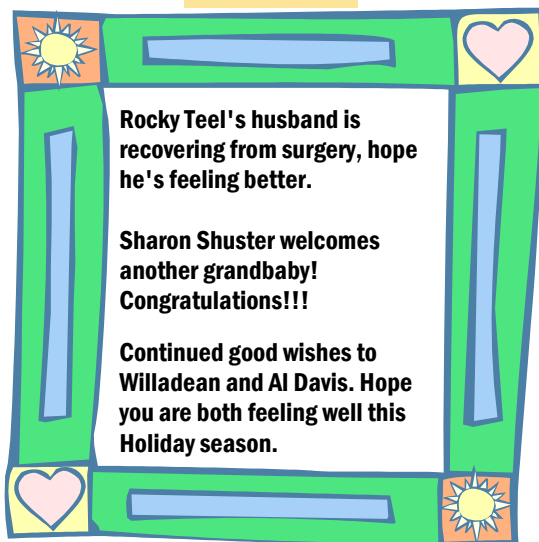
At the January meeting I will pass around a signup sheet for refreshments for each month. Look it over and sign up for the month that will suit your schedule best.

Here's wishing you all good health and happiness in 2012.

Sheila



Sunshine



Painting Pearls

Another tip for when you are painting a round object and need to prop it on something while drying, why not use the sleeve that you put around your hot coffee cup? It is of corrugated cardboard so it's sturdy and it stands well on its own, just prop your round object on it and you can let it stay there until you are ready to paint again. Free and easy. Love it!. Thanks, Sandy, for passing along this tip.

I wish all of you a happy holiday season and of course and most importantly, a very Happy and Healthy New Year. Keep the tips coming, we all have them and we all love to share.

Beth



HOLIDAY PARTY

All attending had a great time. As Chairperson, I want to give a great big thank you to my whole team of Elves for a job well done. The painted pieces were just wonderful. I would also like to give a big thank you to the Board for their monetary donation to our party. Lourdes, your daughter did a special job with the catering. Thank you, thank you, to all.

Carole

RETREAT



Just a reminder to anyone who wants to teach or is thinking about teaching at the GypsyTolers 3rd Annual Summer Sleepover—*Life's A Beach*. You need to furnish information to me or to the Gypsy Tolers (Michelle Murray, 2695 La Praix Street, Highland, CA 92346; gypsytolers@hotmail.com) before February 5, 2012. Remember the Retreat is just around the corner—June 1, 2, and 3rd, 2012. We are going to a wonderful place, the Highland Springs Resort in Beaumont, CA. Great for painting or just for getting away. So come and join everyone for a fun-filled weekend of painting! It will be here before you know it!

Hope to see you all there!

Nancy

Calendar at a glance

Library display setup @ Trails Library, Summerlin	January 4
Planning Meeting for painting demonstration @ Trails Library @ Pat Gettemeyer's	January 11 10am
Business Meeting/Paint-In Teacher: Debbie Ruttenberg Project: A pumpkin design by Debbie \$10, refundable upon attendance	January 14 10am
Painting Demonstration @ Trails Library, Summerlin	February 4 10am-1pm
Deadline for teacher submissions for Summer Sleepover, "Life's a Beach" w/Gypsytolers gypsytolers@hotmail.com	Before 2/5/12
Workshop @ KC House Teacher: Sheila Hughes Project: A Ronnie Bringle Americana design \$15, nonrefundable	February 11 10am
Seminar w/ Kim Hogue @ KC House Project: <i>A Tin Full of Geraniums</i> Watch for further details	February 25
Creative Painting Convention Tropicana	2/26-3/2
Workshop @ KC House Teacher: Cathy Fraizer Project: A Peggy Harris black cat design \$15, nonrefundable	March 10 10 am
Pacific Coast Artists Chapter Seminar with Lynne Deptula Floral Tilt-Top Table Rancho Santa Margarita, CA	April 28-29 9am-4:30pm
Summer Sleepover Retreat: "Life's a Beach" w/Gypsytolers Highland Springs Resort/Lavender Farm Beaumont, CA	June 1-3



**Pacific Coast Artists (PCA) Chapter Invites You to Paint:
Floral Tilt-Top Table* with Lynne Deptula
April 28 – 29, 2012
Daily 9:00am — 4:30pm**

**Or other surface of your choice*

Enjoy two fun-filled days painting in acrylics. (Paints & Mediums will be furnished.) Lynne will demonstrate her style of layering and floating techniques as we paint apples, apple slices, limes, pomegranates, cinnamon sticks, poinsettias, wild roses, and several green fillers on a beautiful tilt-top table or optional oval tray. (Project size is 15"x20")

PCA members may register for this seminar at any time, but early signup is recommended as registration opens to nonmembers on January 31, 2012. This is a beautiful project and you don't want to miss this opportunity to paint with Lynne.

LIMITED TIME SPECIAL SURFACE OFFER: I will be placing an order for the tilt-top tables shortly. The table is normally \$55 PLUS shipping. We have a very brief window of opportunity to get the tables for \$41.25 including shipping.** If you would like to take advantage of this offer, I must place the order by January 26. Make a separate check in the amount of \$41.25, payable to Carol Ganzi, and make sure I have it no later than January 25.

**This order will be delivered to the Las Vegas Painting Convention at the end of February and picked up by PCA board members. Of course, you are free to use/order any surface of your choice. The special pricing is available only as described above.

Carol Ganzi
EGG-CETERA@EARTHLINK.NET
310-273-5096

**PCA April Seminar Registration
Floral Tilt-Top Table* with Lynne Deptula
April 28—29, 2012
Don't Delay as Space is limited
*Or other Surface of your choice**

Name: _____ Phone: _____

Address: _____

City: _____ State: _____ Zip: _____

E-Mail: _____

Check # _____

\$110 - PCA Members

\$120 - Member of other SDP Chapter _____

\$130 - No Chapter Affiliation

Make checks payable to Pacific Coast Artists (PCA) and mail to:

Carol Ganzi
2934 N. Beverly Glen Circle
Bel Air, CA 90077

Seminar Location: Santa Margarita Water District
26111 Antonio Parkway
Rancho Santa Margarita, CA 92688

Directions: From Interstate 5 go EAST onto Oso Parkway. Turn right on Antonio Pkwy. Turn right into Water District parking lot (driveway just past the carwash). Enter building through door on right face of building.

2012 BOARD MEMBERS

President: Barbara Paetzel	655-0915	bjpaetzel@cox.net
1st VP Programs: Gwen Palmer	838-2759	mytombstone@yahoo.com
2nd VP Membership: Sharon Shuster	434-3678	skshuster@cox.net
Secretary: Pat Gettemeyer	263-2431	pgetty46@cox.net
Treasurer: Char Davis	649-9005	charbroiled41@yahoo.com
Ways and Means: Carole Liccardo	516-5144	clliccardo@cox.net
Newsletter: Kris Waskiewicz	869-2126	kw4sstdp@embarqmail.com
Parliamentarian: Pat Pillen	658-6813	budpatp@aol.com

Committee Chairs

Seminars: Anita Miller	363-4231	anitapaint@embarqmail.com
Historian:		
Sunshine: Evie Vaccaro	696-0109	
Community Service: Patty Clark	871-9897	paintbox@shift6.com
Tole Month: Mary Robinson	438-3200	rdonmary@aol.com
Holiday Party: Sandy Kilgour	260-1503	kilgour8@aol.com
Retreat: Nancy Williams	452-0840	wbt99@aol.com
SDP Liaison: Pat Pillen	658-6813	budpatp@aol.com
National Museum of Decorative Painting Rep: Beth Buchwald	361-7139	harguncam@aol.com
Hospitality: Sheila Hughes	658-2383	shughes99@cox.net
Webmaster: Sharon Shuster	434-3678	skshuster@cox.net

JOIN SSTDP ON FACEBOOK

Go to www.facebook.com and find SSTDP at:
sstdp decorative painters

SDP CONFERENCE
FLIGHTS OF FANCY: Celebrating 40 Years of Painting
May 14—19, 2012
Wichita, Kansas
decorativepainters.org

Silver State Tole & Decorative Painters
 is an affiliated chapter of the
 Society of Decorative Painters



