



Tole Talk

Volume 23, Issue 11

November 2011



President's Note



Inside This Issue:

President's Note	1
Seminars	2
Doodlebug Craft Bazaar	2
Tole Month	2
Programs	3
Holiday Party Mtg. & Update	3
Membership	3
Ways & Means/Calendar	4
A Note On Class Courtesy	4
Painting Pearls	4
Board/Committees	5
Birthdays/Sunshine	5
Directions to Meeting	6

Become a member:
 Silver State Tole & Decorative Painters (SSTDP) chapter dues are \$25 annually. Dues to join the Society of Decorative Painters (SDP), the national organization, are \$50 annually for an individual membership. To join SSTDP, you must join SDP.

Editor Notes
 Articles are due the 21st of the month. Please submit articles in a timely manner. Submissions may be in written form or email. Send your written article to:

Kris Waskiewicz, Editor
 2523 Braehead Lane
 Henderson, NV 89044

702-869-2126
kw4sstdp@embarqmail.com

Advertising Rates
 Full page..... \$20.00
 Half page..... \$10.00
 Quarter page..... \$ 5.00
 Business cards..... \$ 3.00
 1 line..... \$ 1.00

Thanksgiving is just around the corner, those 100-degree days are behind us and fall is in the air.

I heard that Anita's class was fun, sorry I missed it! The NET convention was a success, I had about 8 classes and loved every one of them and best yet, I'm 90 percent finished with each project. Actually gave one away to my youngest daughter. I did mail home 4 boxes with new patterns and just plain "goodies" that I couldn't do without! Shopping after the convention with 4 friends was just as much fun as the convention. We actually discovered new and wonderful quilting shops, made it to one museum and did some serious retail therapy. It was great to see Diane Bunker, Shirley Macpherson, and Susan Wright and of course my trusty sidekick from Henderson, Sandy Kilgour. As soon as I got home I started prepping for the Heidi England seminar. I need a vacation!

Thanks to Gwen, Char and Barbara for holding down the fort with the Chapter business meeting. We have new ByLaws and Standing Rules and are narrowing down our choices for a camera/projector system. And most important we will have a great new Board next year. Have you seen the new bookmarks that Kris designed for us? I took some by the library where we have our Tole Month display. Good job on the display.

Gwen has been hard at work getting the Programs set up for next year. We will have a calendar ready for you at the Holiday party. Next year promises to be a very busy one for the Chapter.

Don't forget to send your nomination for the Star Award to Char. Write a description of why you feel your nominee deserves the award. Her committee will be meeting soon to go over the nominations that have been submitted.

We have only two more functions for the year, the Heidi England seminar and our Holiday party. Anita has been busy with all the last-minute details and Carole is wrapping up the final arrangements for the Holiday party. Check out both of their articles for any last-minute news.

Keep on paintin', **Sharon**

SEMINARS



"Santa and the Twelve Merry Days" by Heidi England

We have just a few days before Heidi England's Seminar. Phew, still a few things to iron out, but all in all things are shaping up, thanks to my fabulous committee. If you have any questions, please give me a call!!! See you at Heidi's Seminar.

We will be having a prep night on Thursday, November 3rd, at the KC House from 5:30 - 7/7:30pm. We will be sculpturing our Santa's face. Please have your face traced onto the background, it is not necessary to have his face based in. We will be working on his nose, eyebrows, and mustache with Quikwood. We will also be setting up our Palette for the next day. For Friday, the KC House will be open at 8am; we will start painting at 9am. Have your piece prepped—dark background—the "fabric" either blended or dry-brushed in, and the patterns traced on.

The chapter will be providing lunch for all 3 days. It will consist of deli food from Costco. If you have any special dietary needs, please ensure that you bring what you require. Heidi will also be selling her patterns, etc. Heidi indicated she would paint until 4, 4:30 or until we get to a good spot!!!!

Heidi will need a floor easel if we do not have our projector system. Please let me know if you can bring one. If you have any questions, please give me a call. 363-4231.

JUST A POST SCRIPT TO ALL THIS. BRING YOUR OTT LIGHT IF YOU WANT. THE LIGHT IS GOOD, IT IS NOT GREAT!!!! ALSO, WE WILL NEED A FEW EXTENSION CORDS.

Ok, now (no rest for the weary) onto Kim Hogue's seminar in February. I am waiting for Kim to get some pictures to me for this one-day seminar just before the Creative Painting Convention. If you have any ideas, let me know!!!! I will need to get a seminar meeting together sooner than later, but cannot see it happening prior to Christmas. I hope to have a proposed budget for the Board's November meeting.

ANITA

37th Annual Doodlebug Craft Bazaar
December 3, 2011
9am - 4pm
Boulder City Recreation Center
900 Arizona Street
Boulder City, NV 89005

Come visit Pat Gettemeyer & Alice Leonard at their booth located in the new gym.

This Bazaar, sponsored by the Boulder City Community Club, features 139 booths of all hand-crafted items. There is a raffle booth with 100+ items to be given away. Food will be available. Admission is free. Experience a little (or a lot) of retail therapy with some Holiday shopping, maybe win a prize, have breakfast and/or lunch, and enjoy a wonderful day in Boulder City.

TOLE MONTH

Tole Month is upon us and I want to thank everyone who helped to make it Very successful! We had enough pieces to put into the large 3-window display case, plus a kiosk in the library area. We are displaying in the Rainbow Library at Buffalo and Cheyenne until November 14. And thank you to the committee--Anita, Patty C, Sheila, and Louise--for all their display expertise in making it a great looking display!

The next display will be placed in the Trails Library in early January. If we may keep any of the projects until then, please let me know, so we can have a good display there also. We have only one kiosk there, but will also be doing our demonstration at that library on February 4, so the public will be seeing the examples of our work. If anyone else wants to contribute pieces for the display, please let me know.

I hope everyone sees the display at the Rainbow Library this month! **Happy Thanksgiving and Happy Painting!! Pat G**

PROGRAMS

Hello Chapter Members,

The end of the year is almost here, time sure has flown by. All we have left for our chapter is the Seminar and the Holiday Party; I'm looking forward to them both.

We as a Board have pulled together the classes for next year. There are going to be some wonderful projects. I will have sign-up sheets at the Holiday Party.

January will start with a Business Meeting followed by a Paint-In taught by Debbie Ruttenburg. Sheila Hughes will teach a workshop in February. Sharon Shuster is putting together a calendar with pictures of the projects, like we did last year. So we are on our way in making next year lots of fun for us all.

I also wanted to tell Anita Miller thank you for teaching in October. We all had a great time and the project was lots of fun to paint.

Hope everyone has a great month—
Happy Halloween!

Gwen Palmer



Holiday Party Meeting

Next Planning Meeting: **November 9th**

Location: **Carole Liccardo's**
4102 Mita Way, Las Vegas
Gate Code #1958

Time: **10am—12pm**

We will be collecting items that are painted and wrapping up for the big day.



HOLIDAY PARTY



Deadline is November 1st for reservations. Get your refundable checks into SSTDP to reserve your spot. The first 30 members will be able to take home the painted place setting surprises. Everyone will be able to have a chance in a drawing for the 5 centerpieces.

*Reminder—there will be a voluntary hand-painted gift exchange. Items should not exceed 8". All members and guests are welcome to join in on the fun.

Carole

Membership

Please keep up the good work, Ladies, in spreading the word about Decorative Painting! The year is nearly over & our grand-prize drawing will take place at the Holiday Party so you've got some time to get your name in the bag! Each time you bring a friend or share a business card (make up one of your own if you don't have any left) and give it to an interested friend, you get to put your name, with theirs, into the drawing. The prize is an 'original something' painted by me, or if you prefer, I'll take you to lunch.

This is also the time to renew your chapter and national membership. You can give or send me a check for \$25 for the chapter. You'll need to renew your national membership online (www.decorativepainters.org) or through the mail with the Society of Decorative Painters headquarters in Wichita, Kansas.

I hope you're enjoying your holiday painting since the holidays are indeed upon us! Not a minute to lose!--Warmly, Nanette Hilton, VP-Membership

Ways & Means

Thank you everyone for your fabulous support this year. You keep our chapter going.

November- Seminar month -We will have no raffles this month out of courtesy to Heidi England.

December- Holiday Party -*Board Ornament Raffle* and our *2nd Chance Raffle*. All tickets not previously pulled will be put into one basket for some fabulous **NEW** prizes. No tickets will be sold at the December meeting for the *2nd Chance Raffle*. These tickets will only be from previous raffles, but you will be able to purchase tickets for the *Board Ornament Raffle*. *\$2 for one ticket and \$5 for three tickets.*

Remember, because of your support, you make us all winners to have this wonderful chapter. **PATTY CLARK**



Cleaning Your Water Bucket

All of us at one time or another wants to clean out the water bucket we use while we are painting. I know mine needs it. There are several ways to do this with little or no elbow grease.

1. Squirt some Purell into the bucket and add warm water; let it sit overnight. The next day, use a bottle brush from the baby aisle at the grocery store to scrub it out. Easy.
2. Put a fabric softener sheet and water into the water container; let it sit overnight. The next day, it scrubs up easily.
3. Use oven cleaner and let it sit and then scrub it out.

I personally have tried numbers 1 and 2 with great success. The 3rd, I have not tried yet. But, all reports say it works really well. When I am scrubbing the container out, I don't scrub until it is completely clean and new looking, I want it to look like I actually use it.

If you have any tips you would like to share, please let me know; call me at 361-7139 or email me at harguncam@aol.com. **Happy Painting, Beth Buchwald**

Calendar at a glance

Seminar Prep Night @KC House	November 3 5:30pm
Heidi England Seminar <i>Santa and the Twelve Merry Days</i> @ KC House Contact: Anita Miller	November 4—6 9am
Holiday Party Planning Meeting @Carole Liccardo's	November 9 10am—12pm
Holiday Party @ KC House Deadline for reservations is November 1	December 10

A NOTE ON CLASS COURTESY

Let's be courteous to our teachers. Should it be necessary for a member to make an announcement or conduct Chapter business when there is a class, the proper procedure is to do so before the start of class, at a break, or after the class is finished. Please do not disturb the teacher when class is in session as such an interruption affects the flow of teaching and distracts those painting. Thanks.

Silver State Tole & Decorative Painters is an affiliated chapter of the Society of Decorative Painters



2011 BOARD MEMBERS

President: Sharon Shuster	434-3678	skshuster@cox.net
1st VP Programs: Gwen Palmer	838-2759	mytombstone@yahoo.com
2nd VP Membership: Nanette Hilton	454-2661	nanettehilton@gmail.com
Secretary: Char Davis	649-9005	charbroiled41@yahoo.com
Treasurer: Barbara Paetzel	655-0915	bjpaetzel@cox.net
Ways and Means: Patty Clark	871-9897	paintbox@shift6.com
Newsletter: Kris Waskiewicz	869-2126	kw4sstdp@embarqmail.com

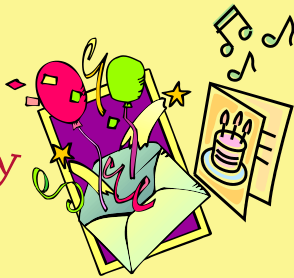
Committee Chairs

Seminars: Anita Miller	363-4231	anitapaint@embarqmail.com
Historian: Sandy Kilgour	260-1503	kilgour8@aol.com
Sunshine: Beth Buchwald	361-7139	harguncam@aol.com
Community Service: Louise Solheim	656-6783	Lou-sol@hotmail.com
Tole Month: Pat Gettemeyer	263-2431	pgetty46@cox.net
Holiday Party: Carole Liccardo	516-5144	clliccardo@cox.net
SDP Liaison: Sheila Hughes	658-2383	shughes99@cox.net
National Museum of Decorative Painting Rep: Beth Buchwald	361-7139	harguncam@aol.com
Hospitality:		
Webmaster: Sharon Shuster	434-3678	skshuster@cox.net

JOIN SSTDP ON FACEBOOK

Go to www.facebook.com and find SSTDP at:
sstdp decorative painters

**HAPPY
BIRTHDAY**



ROCKY TEEL	11/10
SANDY KILGOUR	11/16
JOYCE FERRA	11/16
JEANETTE CRISSWELL	11/28

SUNSHINE by Beth Buchwald

Continued good wishes to Barbara & Roger Paetzel.

Great to see you Willadean, you look mah-vel-ous!

Congratulations to Mary Robinson on the birth of her newest great-grandbaby.

