



Tole Talk

Volume 23, Issue 6

June 2010

Inside This Issue:

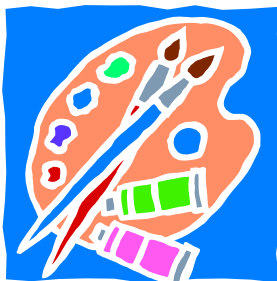
President's Note	1
Programs:	2
Project pictures	3
Ways & Means	3
Birthday	4
Holiday committee	4
Membership	4
Sunshine	4
Calendar at a Glance	5
SDP Convention News	5
Directions to Meeting	6

Editor Notes

Articles are due the **21st** of the month. Submissions may be in written form or email. Send your written article to:

Kris Waskiewicz
2523 Braehead Lane
Henderson, NV 89044

Editor: Kris Waskiewicz
702-869-2126
kw4sstdp@embarqmail.com



President's Note



After Patty's watercolor class I'm itching to do more! I love the idea of making my own cards. What a great class!

Don't miss out on our future Workshops and Paint-In's, we have a minimum requirement of 10 for our classes and must cancel a month before the class if we don't have enough signed up. The exception this year is the Maureen McNaughton project in September. Because I have to order the patterns and brushes from Maureen two months in advance we have to have you signed up before I order in early July.

I'm looking forward to Shayron's class in June, can't wait to see what everyone does with the project.

I'd like to thank everyone who donated personal hygiene items to the Alabama tornado relief. All the supplies that we sent were greatly appreciated. I understand that the local stores were out of the basic's. I'm also happy to see that so many of us participated in the food drive that was sponsored by the Post Office.

Somewhere in the newsletter is a misspelled or out of context word. Whisper it to Sharon at the next meeting and receive an extra raffle ticket!

Programs

Workshops: \$15 nonrefundable, 6 hours
Paint-Ins: \$10 refundable when you attend, 3 hours

Last Chapter meeting was lots of fun, thank you so much Patty Clark for teaching and for sharing your painting talents with us.

For June's meeting, we have Shayron Monahan teaching a Gayle Showel design called "Halloween Weird Wolf". Sheila Hughes has cut out the wood for all of those who ordered, if you still want the wood cut out and haven't ordered it, please call Sheila as soon as you can. The cost is \$15. for the large piece and \$8. for the small piece. Her phone number is 658-2383. Those of you who have the wood piece and do not have the hands and stands, I have them, so contact me to make some arrangements to get them. There is a lot of prep work to get done. Please bring your lunch. I love Halloween and I'm looking forward to this class. It should be a hallow time!

July is our Painting Pay party! This is a Workshop but we'll be doing three projects. We want you to bring a friend, we'll have lots of treats and fun for you and lunch will be provided. The theme is holiday, come and see what holiday projects you will be taking home. Patty Clark, Char Davis and Sharon Shuster will be teaching these fun and easy projects. Just bring your regular painting Supplies, (psst! I would bring a few smaller brushes also, that's a hint for ya).

At our August Paint-In, we have Sheila Hughes teaching after our Business meeting, she will be teaching a Cindy Vitales design called "Heart Warmer Jar Wrap" which was published in PaintWorks earlier this year. Sheila will be providing the loin cloth for this class, she also told me to let you know that you will need to bring fabric brushes. Your good brushes will not work. Those of you who don't know what a fabric brush is, they are stiffer than our other brushes but are not stipple brushes. I will have Sheila bring some to show, that way there won't be any questions. The painting list should be at our next meeting. There will not be prep work for this class, so sign up soon.

Remember, we have a new sign up system. There is always a box with the projects at the back of the room. The box is separated by months and all you have to do is find the month that you want to take a class and fill out the information on the front, slip your check inside and you're done!

In September, Sharon Shuster will teach a Maureen McNaughton design called "Folk Art in Blue". Maureen has developed brushes to paint her technique and there are four that you will need for this class, 6 & 4 round, 0 & 5-0 liner. Sharon will be ordering the brushes and pattern by our July meeting at wholesale prices, the pattern is \$10.95 and the brushes will be around \$20. These prices may turn out to be less depending on the wholesale price that Maureen gives. The surface was painted on an 8'X 10' MDF. We need to have 10 sign up by the July meeting or this class will be canceled.

I'm also looking for teachers for next year, I need 3 more. Look for projects you would love to teach, I need 2 or 3 choices from each teacher, so the Board can vote on which one they want.
See you all next month. Gwen Palmer

June Workshop



July
Painting Pal Party



August Paint-In



WAYS AND MEANS BY PATTY CLARK

The countdown has begun for the number of days we have to go before our annual Silent auction, which is taking place in July this year. Just around the corner too! Please send me an email to paintbox@shift6.com, if you plan to have a painted item or two ready for this chapter fundraiser. Remember you will receive a free raffle ticket if you donate to this cause.

For the coming month of June, you will have the opportunity to win something fun during our "Chinese Raffle." Please remember to wear a name badge, bring a Memory Box, or a "summery" Show & Tell piece. As usual any items having to do with painting that you wish to donate toward future raffles, will be appreciated.

Remember we have "Second Chance Raffle" coming up on December during our Holiday party, so please put your name on any raffle ticket that you place in the prize boxes at our monthly raffles.

Thank you so much for purchasing tickets and supporting the chapter through these activities.

Holiday Party News



Our next planning meeting will be at Barbara Paetzel's home on Wednesday, July 20, 10am to 3pm. We have started painting and will have more items to paint. Bring a brown bag lunch.

There is a clarification on the gift exchange: Any topic for a gift is acceptable. It needs not be Holiday related, If you would like to add a candy cane to your design that is perfectly acceptable. All gifts should not exceed 8" in size and be hand painted.

We are now able to collect advance reservations for the Holiday luncheon. \$25. for members and \$29 for non-members. An envelope is provided in Gwen's box of monthly scheduling for all events. Look under December!

Thanks, Carole

HAPPY BIRTHDAY



Beth Buchwald
Nancy Urga
Kathi Zamora

June 25
June 1
June 20

Membership

Welcome new members:

Lynda Pepitone
5154 Pearlite Circle
Las Vegas, NV 89120
H- 451-6742
C- 499-9038
lynnjo13@aol.com
B'day 8/18

Pat Campbell
1161 Founders Ct
Henderson, NV 89074
H-435-6905
C- 797-0482
campbell552@hotmail.com
B'day 1/24

We extend our deepest sympathy to Kris Waskiewicz on the passing of her brother.



Silver State Tole & Decorative Painters
is an affiliated chapter of the
Society of Decorative Painters



Calendar at a glance

Board Meeting @Gwen's home	June 6 10am
Workshop @ KC House Teacher: Shayron Monahan RSVP to Barbara Paetzel	June 11 10am
Painting Pal Party and Silent Auction	July 9 10am
Holiday committee @ Barbara Paetzel's	July 20
Board Meeting TBA	August 8 10am
Business meeting/Paint-In @ KC House Teacher: Sheila Hughes	August 13 10am
Workshop @ KC House Teacher: Sharon Shuster	September 10 10am
Board Meeting TBA	October 3 10am
Business Meeting/Paint-In @ KC House Teacher: Anita Miller	October 8 10am
Seminar/Heidi England @ KC House	November 4,5,6 9am
Holiday Party @ KC House	December 10 TBA



SDP Convention News

Passing Certifications

CDA Still life—5
CDA Stroke—8

MDA Still—2
MDA Floral- 6

MDA—2

All ballot measures passed including a \$10 increase in membership dues.

Next years convention will be May 14-19 in Wichita.



Tole Talk

Kris Waskiewicz, Editor
2523 Braehead Lane
Henderson, NV 89044

First Class Mail

Post Office....Please deliver to:



Directions to Chapter Workshops and Paint-In's

Take the 215 to Decatur
Exit South on Decatur to
Warm Springs
Turn Left on Warm Springs,
Turn Right on Cameron, to
7515, which is on the corner
Of Cameron and Eldorado

KC House
7515 Cameron St
Las Vegas, NV 89139

Workshops and Paint-Ins
10am

