



Tole Talk

Volume 23, Issue 8

August 2011

President's Note

Inside This Issue:

| | |
|-----------------------------|---|
| President's Note | 1 |
| Seminars | 2 |
| National Museum | 2 |
| Birthdays/Sunshine | 2 |
| Programs | 3 |
| Ready for a Paint-cation? | 4 |
| Calendar/Painting Pearls | 4 |
| San Diego Retreat | 5 |
| Ways & Means/SDP Conference | 5 |
| SDP News/Food for Thought | 6 |
| Board/Committees | 7 |
| Directions to Meeting | 8 |

Become a member:
 Silver State Toile & Decorative Painters (SSTD DP) chapter dues are \$25 annually. Dues to join the Society of Decorative Painters (SDP), the national organization, are \$40 annually for an individual membership. To join SSTD DP, you must join SDP. See www.decorativepainters.org

Editor Notes
 Articles are due the 21st of the month. Please submit articles in a timely manner. Submissions may be in written form or email. Send your written article to:

Kris Waskiewicz, Editor
 2523 Braehed Lane
 Henderson, NV 89044

702-869-2126
kw4sstdp@embarqmail.com

Advertising Rates
 Full page..... \$20.00
 Half page..... \$10.00
 Quarter page..... \$ 5.00
 Business cards..... \$ 3.00
 1 line..... \$ 1.00

The July Painting Pal Party was a success! We painted three fun projects and ate a great lunch and were able to bid on items at our Auction, the grand triplet of painting! Thank you, Patty and Char, for teaching projects. Debbie Ruttenberg painted some cute clay pots for KC House, thanks.

Sheila Hughes will be teaching at our Paint-In in August. Our Business meetings have been fairly short this year so be prepared to start painting before lunch.

We need some volunteers for the Nominating Committee—elections will be at our October 8 Business Meeting/Paint-In. Last year we had elections in October because we had a Seminar in November with Lynne Andrews. Our Seminar with Heidi England is in November this year and because it's a 3-day event it was decided by the Board that we wouldn't have a meeting or workshop in November. That means that Yikes! we have to look for members who would like to be on the Board. When you get that call please think about volunteering to be on the Board.

Our ByLaws and Standing Rules haven't been updated in several years and I would like to have a committee revise them before the end of the year. If you are interested in working on this committee, please give me a call.

Remember, we are working very hard to get members to sign up for workshops/paint-ins as early as possible; we have to cancel a month in advance of a class if we don't have 10 members signed up. Thank you for your support!

Keep on paintin', Sharon

Remember—Look for a misspelled word or a word used out of context. Whisper it to Sharon at the next meeting, win a free raffle ticket!

SEMINARS

It's time to think about November... our Heidi England Seminar is Friday, Saturday, and Sunday, November 4th, 5th, and 6th at the KC House.



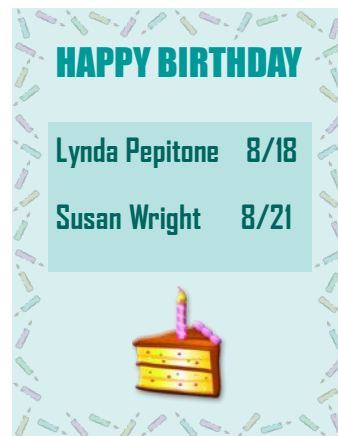
"Santa and the Twelve Merry Days"
by Heidi England

Heidi England's Seminar is getting filled. I still have a few spots left, \$25 will hold your seat. I will be displaying "Santa and the Twelve Merry Days" at August's chapter meeting. He is exquisite!!!! And will be quite an heirloom. I will be getting my committee together to "tie up" our loose ends and get started on the incredibly charming pins in August. This is an opportunity of a lifetime painting with Heidi, one of our country's renown Folk Artists. The total cost of the seminar for our chapter members is \$120, and \$145 for non-members. Let me know if you have any questions. All payment for the Heidi England Seminar will be due on September 1st. Thanks.

Anita

THE NATIONAL MUSEUM OF DECORATIVE PAINTING By Beth Buchwald

Are you a friend? SSTDP is a friend of the National Museum of Decorative Painting. Located in Atlanta, Georgia, the museum used to be called the DAC or the Decorative Arts Collection. It is a museum that houses a wonderful collection of decorative painting from artists both well known and some that are not so well known and lots that are historically known. The Museum also holds classes at the site in Atlanta, publishes a newsletter and publishes books about our art form. The latest published endeavor is entitled 100 Angels. It is a large, glossy coffee table book that showcases 100 artists who painted one of four angel designs. Included in the book are large photographs of each angel, plus two CDs that hold the complete patterns, more photos and directions for each of the angels. It is a wonderful book to add to your collection. And, you don't have to be a friend of the Museum to buy it. If you want to order this book at a cost of \$50, just call Andy Jones at the Museum in Atlanta; the phone number is 1-404-351-1151. I bet your favorite artists are featured. When you call you can talk with him about becoming a friend of the Museum. It is a yearly membership and costs \$50. The Museum is important to preserve our art and keep it alive. Membership is also tax deductible. So, consider becoming a friend of the Museum.



SUNSHINE

*Feel better soon wishes go to
Roger, Barbara Paetzel's husband*

*Continuing good wishes go to
Willadean and Al Davis*

**Congratulations, Sharon Shuster,
on the marriage of your son
and
for your daughter expecting
her first baby
later this year**

PROGRAMS
by gwen palmer

Hello Chapter Members,

Our Painting Pal Party was a wonderful time—everything turned out really good. Thank you to everyone who helped. Thanks also to our teachers, Sharon, Patty and Char; Evie and Nancy for your help in cleaning up the kitchen; all who helped with the food; and Sandy for the yummy goodie bags. I hope everyone enjoyed themselves.



AUGUST

August is our business meeting; after, Sheila Hughes will be teaching us that really cute Heart Warmer Jar Wrap by Cindy Mann Vitale. I hope everyone has signed up for this paint-in (\$10, refundable when you attend class) and you have your instructions. All that needs to be done before class is to have your pattern traced on and ready to paint. Don't forget, you need fabric brushes, paints, and all of your regular painting supplies.

Sharon's workshop, Folk Art in Blue, is in September. The cost of \$15 (nonrefundable) for this class will pay for your pattern that Sharon is ordering. July was the cutoff for this class, so I will not be taking anymore signups for September. Sorry!



SEPTEMBER

In October Anita Miller will teach our last chapter class of the year, Boo Pumpkins by Kelly Hoernig. The design is a Halloween scene on a pumpkin. This paint-in is \$10, refundable when you attend, so sign up as soon as you can, please. We really need you to sign up a month in advance; remember if we do not have 10 signed up for our classes we will have to cancel, so the sooner the better is the best way to keep our classes going.

Also, any chapter meetings at which there will be prepared goodie bags passed out, those who did not sign up on time will not receive goodies. A few ladies called me the week of the Painting Pal Party; we were lucky we had enough of everything to make up more goodie bags for those who didn't sign up in time. So to be fair to those who put these wonderful treats together we need to know a month ahead of time. I hope you all understand how much work it takes to pull everything together, and we need to be considerate to those who do all of the work. Thanks for your understanding.



OCTOBER

I hope everyone is having a wonderful summer, and that we will see you all at our next Chapter meeting. Sheila is a great teacher and it should be lots of fun. Also, to all of you who signed up to teach next year, 2012, I will be needing at least 2 to 3 pictures of projects you would love to teach by September. They do not need to be pictures of something you painted; they can be from a magazine. The Board needs them in order to pick what projects we would like you to teach. When the projects are chosen you will be notified which was selected. The picture you submitted for your project will be used for next year's calendar, or if you have your project painted we can take pictures of it. It will be up to you. Looking forward to seeing some wonderful projects. Thanks to everyone for your support. Have a great Month.

READY FOR A PAINT-CATION?

Consider these destinations—

HEART OF OHIO TOLE (HOOT)
Columbus, Ohio
August 11-13, 2011

PAINT A SEASON OF MEMORIES
Portland, Oregon
September 22-25, 2011

NEW ENGLAND TRADITIONS
Marlborough, Massachusetts
October 5-9, 2011

SAN DIEGO BRUSH WHACKERS
26th Annual Autumn Getaway @
Highlands Springs Resort
Cherry Valley, California
October 7-9, 2011

CREATIVE PAINTING CONVENTION
Tropicana, Las Vegas, Nevada
February 26-March 2, 2012

SOCIETY OF DECORATIVE PAINTERS CONFERENCE
Wichita, Kansas
May 14-19, 2012

CREATIVE PAINTING CONVENTION
Dallas, Texas
October 24-29, 2012

PAINTING PEARLS
by Beth Buchwald

Calendar at a glance

| | |
|---|----------------------|
| Board Meeting Host: Char Davis RSVP to Char | August 8 10am |
| Business Meeting/Paint-In <i>Heart Warmer Jar Wrap</i> by Cindy Mann Vitale Teacher: Sheila Hughes \$10, refundable upon attendance | August 13 10am |
| Workshop— <i>Folk Art in Blue</i> by Maureen McNaughton Teacher: Sharon Shuster \$15, nonrefundable | September 10 10am |
| Board Meeting TBA | October 10am |
| Business Meeting/Elections/Paint-In <i>Boo Pumpkins</i> by Kelly Hoernig Teacher: Anita Miller \$10, refundable upon attendance | October 8 10am |
| Heidi England Seminar <i>Santa and the Twelve Merry Days</i> © KC House Contact: Anita Miller All payments due September 1 | November 4—6 |
| Holiday Party © KC House Member, \$25; each guest, \$29 Mail check to Barbara Paetzel; Or deposit check in envelope for December in the Programs box at a meeting | December 10 |

Last year, our president very considerately gave us all a copy of a "calendar" of the upcoming painting projects for this year. I put mine in a notebook that has a window on the front cover, and when I pay for a class/event each month, I write in the box whether I wrote a check or paid cash. That way I always know immediately whether I paid or not. Also, in the notebook, I put the instructions and/or patterns and photos in clear plastic holders, so they don't get misplaced. It has really helped me keep things organized this year, a first!



Does getting away, hanging out with your friends, enjoying some great food, and being creative sound like the kind of weekend you might be interested in?

Then join the San Diego Brush Whackers for three days of painting and playing in the foothills of Cherry Valley, California. We offer a variety of painting classes in a relaxing setting. Let us take you and your brushes away for the weekend.

San Diego Brush Whackers 26th Annual Autumn Get-Away

October 7-9, 2011

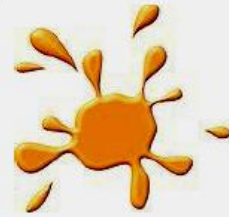
At Highland Springs Resort Cherry Valley, CA

Visit www.brushwhackers.org

To download a Full Color Registration Brochure and Registration Form

For more information contact:

Sandy LeFlore (951) 371-3489 or email: JstFnDsgn@aol.com



Ways & Means News

Many THANKS goes out to all of you who participated in the Silent Raffle fund raiser at our July meeting. It was a success. We raised \$419.00. Gwen, Joan, Kris, Sharon S., Patty C., Sandy, Sharon D., Beth, Shayron, Anita, and Char, we APPRECIATE your generous donations for this raffle. Be sure to collect a raffle ticket at the next meeting from me, a small recognition of your time and thought put towards this Ways & Means project. And those of you who were lucky enough to walk away with one or more of these fabulous items, a great big THANK YOU for your part and CONGRATULATIONS!

We will have another "Chinese Raffle" at the next meeting. Tickets will be available to purchase and deposit in the bag of your choice. You can also receive a free ticket if you wear any painted name tag, bring something for the future chapter raffles, bring a Memory Box, or something for Show and Tell.

I will also have gently used patterns and books for sale at 25¢ each.

Cheers, Patty Clark

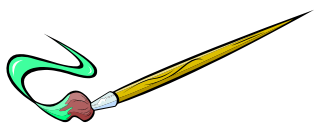
SDP'S 40TH ANNIVERSARY

**SOCIETY OF DECORATIVE PAINTERS CONFERENCE
MAY 14-19, 2012
WICHITA, KANSAS**

The SDP Board considered whether to make Wichita the location of the annual SDP conference on a permanent basis. Based on input from members, they have decided that the 2012 SDP Conference will be the last conference held in Wichita for some time. For 2013 the SDP Board is exploring the option of having the conference in conjunction with another established convention, such as those held by some chapters. Stay tuned...

SDP NEWS...from the July issue of "Chapter Happenings"

Elizabeth Stevenson, SDP Chapters Coordinator, advised that the SDP Board of Directors wants to get to know the chapters better. Each Board member has been assigned a list of SDP chapters and will be contacting chapter presidents to ascertain what their respective chapters are doing. What would you like the SDP Board to know about SSTDP?



The SDP Nominating Committee is seeking members to serve as elected officials. Now is the time to recommend a nominee or to express your interest in running for office. Nominees must be members in good standing for not less than 3 years immediately preceding the time of election and must be members at the time of election. In 2012 SDP will elect one vice president/president elect, one treasurer, three board members-at-large, and three Nominating Committee members. Candidates for vice president/president elect must have had previous service as an elected member of the SDP Board of Directors. If interested contact Nominating Committee Chair Georgia Magarrell by phone at 503-975-9447 or email her at georrog@aol.com.

Food for thought...

Like our lives and finances have changed, so has SDP's. SDP has experienced increasing overhead and expenses for the printing and mailing of the magazine, the convention, airfares, long-term commitments, etc. at a time when there is a down-turn in the economy, lower membership numbers, and a dramatic drop in income from investments. SDP is trying to recover lost ground but the need for support is great. The \$10 increase in dues voted in at the 39th Annual Meeting is needed to keep SDP vital. We must decide the value of our benefit from SDP membership and if we want SDP to survive to represent our common interest.



2011 BOARD MEMBERS

| | | |
|-----------------------------------|----------|-------------------------|
| President: Sharon Shuster | 434-3678 | skshuster@cox.net |
| 1st VP Programs: Gwen Palmer | 838-2759 | mytombstone@yahoo.com |
| 2nd VP Membership: Nanette Hilton | 454-2661 | nanettehilton@gmail.com |
| Secretary: Char Davis | 649-9005 | charbroiled41@yahoo.com |
| Treasurer: Barbara Paetzel | 655-0915 | bjpaetzel@cox.net |
| Ways and Means: Patty Clark | 871-9897 | paintbox@shift6.com |
| Newsletter: Kris Waskiewicz | 869-2126 | kw4sstdp@embarqmail.com |

Committee Chairs

| | | |
|--|----------|---------------------------|
| Seminars: Anita Miller | 363-4231 | anitapaint@embarqmail.com |
| Historian: Sandy Kilgour | 260-1503 | kilgour8@aol.com |
| Sunshine: Beth Buchwald | 361-7139 | harguncam@aol.com |
| Community Service: Louise Solheim | 656-6783 | Lou-sol@hotmail.com |
| Tole Month: Pat Gettemeyer | 263-2431 | pgetty46@cox.net |
| Holiday Party: Carole Liccardo | 516-5144 | clliccardo@cox.net |
| SDP Liaison: Sheila Hughes | 658-2383 | shughes99@cox.net |
| National Museum of Decorative Painting Rep: Beth Buchwald | 361-7139 | harguncam@aol.com |
| Hospitality: | | |
| Webmaster: Sharon Shuster | 434-3678 | skshuster@cox.net |

JOIN SSTDP ON FACEBOOK

Go to www.facebook.com and find SSTDP at:
sstdp decorative painters

Silver State Tole & Decorative Painters
is an affiliated chapter of the
Society of Decorative Painters



