



Tole Talk

Volume 23, Issue 4

April 2011

President's Note

Inside This Issue:

President's Note	1
Programs	2
Membership	3
Are You A Friend?	3
Holiday Party Meeting	3
Ways & Means	4
Seminars/Idea...	4
Calendar	5
Sunshine/Birthdays	5
SDP News	6
Board/Committees/SDP Conf.	7
Directions to Meeting	8

Become a member:
Silver State Tole & Decorative Painters (SSTD DP) chapter dues are \$25 annually. Dues to join the **Society of Decorative Painters (SDP)**, the national organization, are \$40 annually for an individual membership. To join SSTD DP, you must join SDP. See www.decorativepainters.org

Editor Notes

Articles are due the 21st of the month. Please submit articles in a timely manner. Submissions may be in written form or email. Send your written article to:

Kris Waskiewicz, Editor
 2523 Braehead Lane
 Henderson, NV 89044

702-869-2126
kw4sstdp@embarqmail.com

Advertising Rates

Full page..... \$20.00
 Half page..... \$10.00
 Quarter page..... \$ 5.00
 Business cards..... \$ 3.00
 1 line..... \$ 1.00

Thank you, Barbara, for a great class. I thoroughly enjoyed painting the project. I can't wait to finish and bring it back for Show & Tell. Again, our members showed some really wonderful imagination in their choice of surface! Cathy Frazier had the most unique surface and even though Beth Buchwald painted in her sketch book it was spectacular! I know that sometimes changing the surface and even changing the color palette as Gwen Palmer did can be daunting when you paint a new technique but you really pulled it off. Kudos to everyone who stretched out of their comfort zone.

I can't believe that we have a new home for our meetings. By a clear majority the members chose KC House. Now we can get down to the business of painting, enjoying friendship and exploring new chances for community service. Our first order of business is to get volunteers to paint an item each month for KC House, that's our rent fee! Call or email me if you can donate a painted item anytime this year. Nanette Hilton graciously donated a beautiful painted large canister for our March meeting, we need someone to step forward for April. We did have an issue that arose at our March meeting, mainly setting up the room for the meeting. At our April Business meeting we need to vote on whether we will do this ourselves or pay \$20 to have it done for us. Since there is a full kitchen we can now have coffee again at the meetings, and we are able to store all our supplies at KC House, something we haven't been able to do in the past. Barbara Paetzel has volunteered to set up our coffee. Just remember to stick around after the meeting to help her pick up after the meetings/workshops.

We are going green and joining the digital age. If you have an email address you will not be receiving a hard copy of the newsletter. It's available online on our website and you can even make a color hardcopy for yourself. You will receive an email notification when the newsletter is available online each month. We have had our website for over 5 years and are proud of the advances that we have made as a chapter joining the wave of the future! While you're at it, check out our Facebook page that Nanette Hilton has set up for us. Decorative painting is one of the original "green" art forms, just look at how many surfaces that we repurpose every time that we paint.

Thank you Patty Clark for joining me at The Bike Shop for Lucky Ladies Night. We were able to sit and paint and show anyone who stopped at our table just exactly what we do. We promoted our Chapter and SDP with a fun evening on St. Patrick's Day!

With Creative Painting behind us, bring your projects to the April meeting. Don't forget to pack a lunch, bring an Ott light and a smile on your face! Our meetings/workshops/paint-ins will start at 10am.

Happy Easter and Passover to all our members and their families.

Sharon



PROGRAMS

with Gwen Palmer

Hello Ladies,

Wasn't Barbara's class wonderful? Thank you so much, Barbara, we all had a great time!

For the next three months the chapter's painting projects will be:

April—Char Davis will be teaching Geri Tilley's "Starry Night Star" on **April 16th**. We had to change this month's meeting to April 16th as the KC house is booked for the 9th, so mark that change in date on your calendar. The project will be on slate or whatever you would like to paint on. Char does have slate that she is willing to give all of you at no charge. If you would like to have one, give her a call at 649-9005, she said she will have the piece all ready for you to paint. The cost to hold your spot in this class is \$10, which will be refunded to you when you show up. Also, **we would like to make April a potluck lunch for everyone:** if your last name starts with **A-H**, we would like you to bring a main dish; **I-P**, please bring a salad and **Q-Z**, bring dessert. We hope everyone will participate in this luncheon. We know we have some wonderful cooks in the group.

May—Patty Clark will be teaching "Christmas Memories" from Susan Scheewe Brown's book entitled Enjoy Watercolor. The snow globe design will be on 14" x 9 1/2" watercolor paper to be supplied along with watercolor paints; all you need to bring is your painting supplies and brushes (especially a 1/2" angular shader, #1 liner, #5 round, any size fan brush, and 1" background shader or other brush for clean water and blending.) Her class is \$15, nonrefundable. If you plan to paint on another type of surface, please let Patty know so that she can provide a paint conversion list for you. Any questions, call Patty at home on 871-9897 or on her cell at 280-2062.

June—Shayron Monahan will be teaching Gaye Shoell's "Halloween Wolf". Sheila Hughes' husband will be cutting the wood out for those who would like this project; there will be a signup sheet at the next meeting for the wood, and we should have the cost for you then. The cost for the class is \$15, nonrefundable. Please sign up as soon as you can for these classes.

I'm now looking for teachers to teach next year, I hope I will have some volunteers, otherwise I will be asking you to teach. Those who will be teaching need to submit 3 projects for the Board to vote on. I will need these projects by Sept 10, 2011 so I can take them to the October Board meeting to be voted on. Please step up to the plate, volunteer, and let's make next year another great year. I love working with you all, we have a great group of women—thanks for all you do. If you haven't signed up yet for April's class, just mail your checks to me at 9353 Dancing Daffodil Ave., Las Vegas, NV 89129. and I will mail you the instructions.

REMINDER: There will be a committee meeting at my house on Wednesday, March 30th, at 10am for July's Painting Pal Party. Please come and bring some easy holiday project ideas. Please RSVP to me. Thanks—GWEN

April



May



June



"Non-profit supporter of Las Vegas' charities."

DINOSAURS & ROSES

Nothing's extinct until we say it is • Re-sale Shoppe

Presents
SECOND SUNDAY





BROWSE, SHOP, DISCOVER!
WIN RAFFLE PRIZES!

FUN
FOR EVERYONE!


6029 W. CHARLESTON LV, NV 89146
CORNER OF W. CHARLESTON & S. JONES
(LOOK FOR THE PINK ENTRANCE)

APRIL 10TH 2011
10AM-6PM

BUY A PIECE OF ART & GET 10% OFF
YOUR PURCHASE IN THE RESALE SHOPPE!

GOT DINOSAURS?
DONATE YOUR NEWGENTS USED ITEMS TO US!

More Info: (702) 277-3752 or (702) 258-1187
WWW.DINOSAURSandROSES.ORG



Are you a FRIEND?

Want to know how you can become one?

Stay tuned...




MEMBERSHIP

Carole Liccardo has a new home phone number:
702-516-5144




HOLIDAY PARTY MEETING

Our first meeting yielded a vast amount of ideas and has put into action our goals for a great holiday Party in December.

Our second meeting, which will include painting time, will be Wednesday, May 11th, from 10am-3 pm. Bring your lunch and normal painting supplies.

PLACE: Carole Liccardo's home
RSVP: 419-0009 or 516-5144

WAYS & MEANS

with Patty Clark



Congratulations to Cathy Frazier, Beth Buchwald, and Patty Clark. Yea for us! We won raffle prizes at the March meeting. March was indeed lucky for us. Remember to write your name on any raffle tickets you put into the collection boxes at a meeting so that you will have extra chances to win during a Second Chance Raffle we may have during the year. Thank you to Beth Buchwald and Barbara Paetzel for bringing a lovely handpainted item for Show 'n Tell too. They received a free raffle ticket.

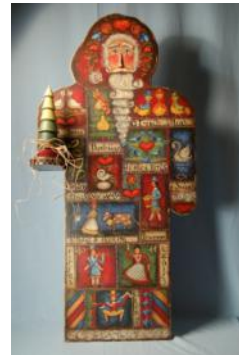
April 16th will bring more opportunities for painters to win something fun during our "Chinese Raffle". Tickets will be for sale, but if you would like to receive a free ticket, please wear your name badge, bring a painted memory box, or something for Show 'n Tell. Maybe you have something you like to set out especially for Spring or Easter that is handpainted. Please bring it to share. Wouldn't it be fun to see lots of bunnies and chicks greet us at this meeting? And I'm sure we would all like to see how you finished the Gail Anderson piece from March 12th.

Again I would like to remind you that we have our annual Silent Auction coming up in just four months. I would like to express a warm thank you to Joan Fay for the lovely folk art teapot that she donated to Ways and Means. It will be a wonderful offering at our Silent Auction on July 9th. This will be our main fundraiser for the year, so please warm up your brushes and paint something for July 9th. And last but not least, a thank you goes to Kris Waskiewicz for bringing so many painting magazines and books for our sale. Thank you to those of you who purchased books and patterns. The next meeting when I will bring the books and patterns box will be in June.

Ways and Means welcomes any painting-related objects, wood, gently used books & patterns, etc. for donation to our "raffle closet." Just give me a call and we can arrange a way to get together, if you have a donation. See you April 16th, come rain or shine.

SEMINARS

Our seminar with Shara Reiner is now a fond memory. I want to thank the Seminar Committee for a Job-Well-Done. Thanks also to Peggy at the KC House for all the extra help she gave us. Shara was fun to paint with and I think it was a relaxing, enjoyable seminar.



"Santa and the Twelve Merry Days" by Heidi England

Now, to get ready for November's seminar with Heidi England. Just a reminder, the seminar dates are November 4th, 5th, and 6th. The price is \$120 for the 3-day seminar. I will be opening registration up to the chapters around us in May—get your deposit of \$25 in ASAP!!!! Give me a call if you have any questions, 363-4231.

ANITA



IDEA . . .

Have you ever masked off an area with tape, then painted it, only to have the paint bleed under the tape? Next time, tape as usual, then coat using the same color as wall or piece—this seals the edges—then paint it again with the color of choice. Remove the tape and you have clean crisp edges.

Carole Liccardo



Calendar at a glance

July Party Committee Meeting @ Gwen Palmer's RSVP to Gwen	March 30 10am
Board Meeting @ Gwen Palmer's RSVP to Gwen	April 4 10am
Business Meeting/Paint-In Potluck Lunch: A-H, bring a main dish I-P, bring a salad Q-Z, bring a dessert Project: <i>Starry Night Star</i> Teacher: Char Davis \$10 refundable at class	April 16 10am
Holiday Party Committee Meeting @Carole Liccardo's RSVP to Carole	May 11 10am-3pm
Workshop— <i>Snow Globe Watercolor</i> Teacher: Patty Clark \$15 nonrefundable	May 14 10am
Workshop— <i>Halloween Wolf</i> Teacher: Shayron Monahan \$15 nonrefundable	June 11th 10am



SUNSHINE

Our heartfelt condolences and sympathy are sent to:

**Anita Miller for her niece's passing;
Sandy Kilgour for the passing of her mother-in-law.**

Get Well wishes to our newest member Joanne Tucker. We hope you are feeling better after your recent surgery.

Some familiar faces we saw at Creative Painting:

Natalie McBrien, Joan Fay, Jane Haggard, Debbie Hoetzel, Jan Bennett, Alice Leonard, Diana Tyner, Diane Bunker and Susan Wright.

How much fun did we have visiting and painting together once again. It seemed like old times. I know I had a great time.

BETH





Did You Know? Facts from your SDP Board of Directors

SDP Conference will be in Wichita again in 2012 for our Ruby (40th) Anniversary.

Membership dues are our main source of revenue.

With a drop in membership comes a decrease in revenue which makes it more difficult to maintain the Society administration and programs.

Declining membership isn't a recent occurrence. It has been happening for many years, along with a decline in interest in decorative painting as a hobby.

The average SDP member age is around 65.

• With a little help from every member and every chapter we will be able to remain strong through this recession.

• The best ways you can help in the long-term is by:

Recruiting new members.

Teaching beginner painters or encouraging others to teach beginners.

Belonging to a chapter and helping it grow.

• It takes many volunteers to make SDP successful. The Board and Staff would like to thank our members for volunteering, being active in chapters, teaching others to paint, and everything else that you do.

If each member recruited just one member, our membership would double from 17,085 to 34,170.

• In the past year, your Society has:

Redesigned and expanded the SDP website.

Started posting educational articles on the SDP Blog.

Posted a video about SDP Conference on YouTube.

Offered an affinity credit card that earns you rewards while it benefits SDP.

Partnered with fundraising websites Shop for Museums, GoodSearch, and GoodShop to benefit SDP.

Posted free painting projects on the SDP website.

Created a Members Only forum that you can use to discuss topics and ask questions.

Been very active on social networking sites such as Facebook. (Friend us!)

• The Board has focused on fiscal responsibility by making many cutbacks, including:

Conducting business electronically.

Moving SDP Conference to Wichita.

Reducing staff.

Conducting Board meetings on SKYPE each month.

Having face-to-face Board meetings only twice a year.

Sharing rooms at SDP Conference and during Board meetings.

Working at SDP Conference instead of hiring temporary help.

• Your SDP staff has:

Not had a performance raise or cost of living increase for more than nine years.

Taken on extra responsibilities due to staff reductions.

Found more labor-efficient ways to do their jobs.

Made many suggestions that have reduced expenses while maintaining service.

Have accepted reductions in benefits for the good of the Society.

Rumors continue to crop up about the solvency of the Society and potential bankruptcy. These are **NOT TRUE**:

SDP owns the headquarters building in Wichita (which is more economically feasible than renting space) and we receive income by renting space to chapters and teachers.

SDP has no debt.

We ask for donations and for your help in recruiting members so that we can maintain our headquarters and programs.

Your SDP Board of Directors and staff continue to work on your behalf to make the very best use of your membership dollars. Together we will ensure your Society remains strong and moves successfully into the future

**Silver State Toile & Decorative Painters
is an affiliated chapter of the
Society of Decorative Painters**



2010 BOARD MEMBERS

President: Sharon Shuster	434-3678	skshuster@cox.net
1st VP Programs: Gwen Palmer	838-2759	mytombstone@yahoo.com
2nd VP Membership: Nanette Hilton	454-2661	nanettehilton@gmail.com
Secretary: Char Davis	649-9005	charbroiled41@yahoo.com
Treasurer: Barbara Paetzel	655-0915	bjpaetzel@cox.net
Ways and Means: Patty Clark	871-9897	paintbox@shift6.com
Newsletter: Kris Waskiewicz	869-2126	kw4sstdp@embarqmail.com

Committee Chairs

Seminars: Anita Miller	363-4231	anitapaint@embarqmail.com
Historian: Sandy Kilgour	260-1503	kilgour8@aol.com
Sunshine: Beth Buchwald	361-7139	harguncam@aol.com
Community Service: Louise Solheim	656-6783	Lou-sol@hotmail.com
Tole Month: Pat Gettemeyer	263-2431	pgetty46@cox.net
Holiday Party: Carole Liccardo	516-5144	clliccardo@cox.net
SDP Liaison: Sheila Hughes	658-2383	shughes99@cox.net
National Museum of Decorative Painting Rep: Beth Buchwald	361-7139	harguncam@aol.com
Hospitality: Barbara Paetzel	655-0915	bjpaetzel@cox.net
Webmaster: Sharon Shuster	434-3678	skshuster@cox.net



JOIN SSTDP ON FACEBOOK

Go to www.facebook.com and find SSTDP at:
sstdp decorative painters



SDP's 39th Annual Conference & Expo
May 16 – 21, 2011
Wichita, Kansas
www.decorativepainters.org

Tole Talk

Kris Waskiewicz, Editor
2523 Braehead Lane
Henderson, NV 89044

First Class Mail

Post Office....Please deliver to:



Directions to Chapter Paint-Ins and Workshops:

Take the 215 to Decatur,
Exit South on Decatur to
Warm Springs,
Turn left on Warm Springs,
Turn right on Cameron, to
7515, which is on the corner
of Cameron and Eldorado

Meetings are held at 10am
**Check Programs/Calendar
for dates**

KC House
(At the corner of Cameron &
Eldorado)
7515 Cameron Street
Las Vegas, NV 89139

